

Message from the Public Health Administrator

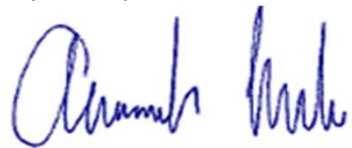
Dear Partners,

Approximately two years ago, the Department of Health and Human Services initiated a call to action identified as Public Health (PH) 3.0, moving public health away from a century-old business model that had many departments stuck employing day-to-day operations that existed in siloes and programs and partnerships geared towards “the way we have always done it”. PH 3.0 is a concept where local health departments serve as Chief Health Strategists for their communities, focusing on the development of cross sector collaboration as well as data and resource sharing to address social, structural, and spatial determinants of health. This model moves public health away from a focus of a safety net provider and into a population health, systems thinking trajectory that has the potential to turn the dial on health outcomes in demographically diverse communities across the country.

Among many small and rural LHDs, these complex transitions are challenged due to limited capacity and evidence available to guide decision-making. As a result, gaps exist in the availability and accessibility of tools to aid local public health leaders and their clinical community partners in this process. BCHD has incorporated PH 3.0 principles into its year old, first ever departmental strategic plan, organizational chart, and its Illinois Project for Local Assessment of Needs (IPLAN).

BCHD’s IPLAN was structured and written in partnership with those writing the County Comprehensive Plan. This collaboration not only featured shared data and resources but a merging of action plans to assure a “health in all things” approach to intergovernmental operations. Both plans cross-reference each other, and the goals and objectives are aligned. Now that the IPLAN has been officially adopted by the Boone County Board of Health and the Illinois Department of Public Health this past September, BCHD next steps include applying for grant funding to address our three identified health priorities and the building of a joint performance management dashboard to simultaneously implement and monitor the two plans at a county level. My department is pleased to share the following pages of this report as a snapshot into our work over the past year.

Respectfully,



Amanda Mehl, Public Health Administrator

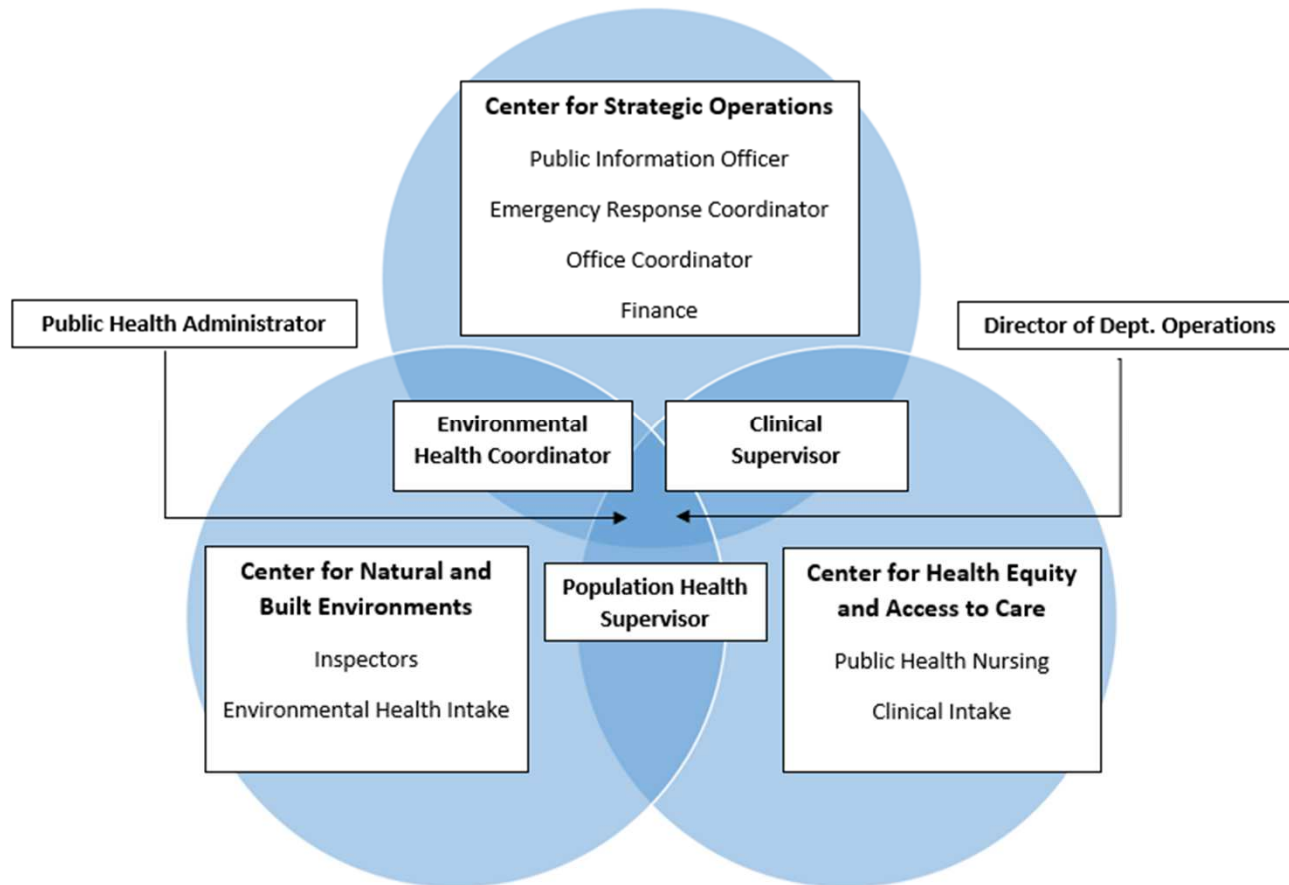


Top Health Priorities

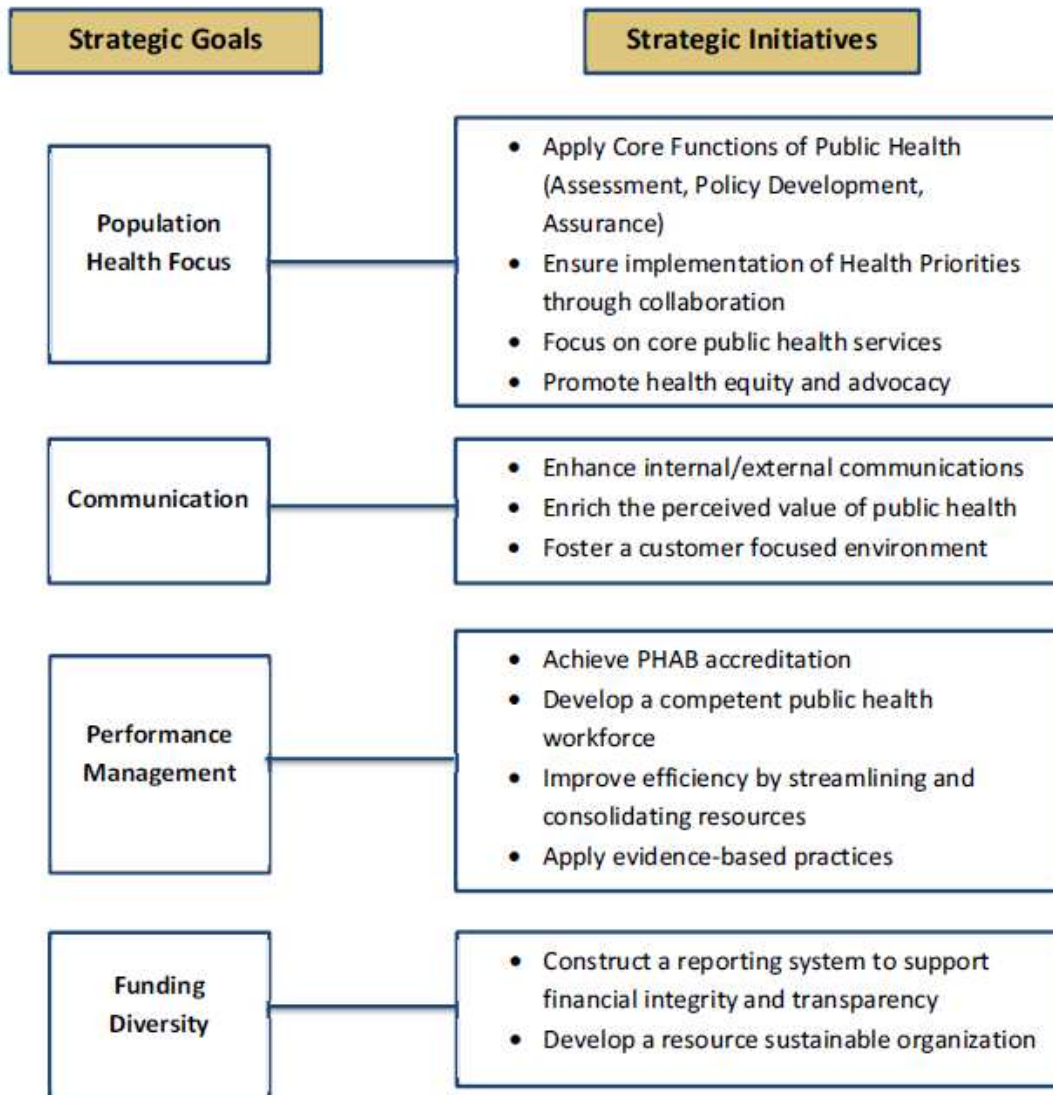
1. Behavioral Health
2. Maternal Child Health (MCH)
3. Chronic Disease

2018 Health Department Organizational Chart

Another way the Boone County Health Department (BCHD) has incorporated the PH 3.0 concept into departmental operations is by redesigning its organizational chart and departmental reporting structure as follows: Once a typical hierarchical model, the new chart reflects staffing and programs structure designed around the core functions of public health and public health workforce competencies. Job descriptions have been re-written to reflect this model and staff from historically separated divisions within the department now work on cross-sectional teams to gain greater understanding of each other's responsibilities. Traditional clinic and environmental staffing roles are now merged allowing departmental staff to be better equipped to tackle overlapping public health issues such as disease investigation of foodborne illness and tracking West Nile virus activity in humans, birds, and mosquitos.



Boone County Health Department Strategic Plan 2018



Domain 1: Monitor Health

Every five years, the Boone County Health Department (BCHD) completes its Illinois Project for Local Assessment of Needs (IPLAN) in collaboration with local community agencies, elected officials, and county residents. BCHD chose the MAPP (Mobilizing for Action through Planning and Partnership) which is a community-wide strategic planning process for improving public health. Its purpose is to help communities prioritize public health issues, identify resources for addressing them, and take action. BCHD kicked off 2018 with the compilation of nearly 850 surveys distributed in the community to collect data for two of the four MAPP Assessments, the Community Strengths and Themes and the Community Health Status Assessment. In January, we brought together stakeholders and community leaders for a series of six meetings to conduct the Local Public Health System Assessment and in March we worked with our local elected and appointed officials, distributing a Survey Monkey and used the responses to complete our Forces of Change Assessment. In April, we brought our community partners back to the table for a 90 minute Community Strategic Prioritization Forum to determine our strategic health priorities which are Behavioral Health, Maternal Child Health, and Chronic Disease.

The action plan is being carefully aligned with the action plans of the County Comprehensive team to create a health in all things approach to population health going forward, creating a model for health departments throughout the state. The IPLAN, as well as phases of the MAPP process, are available on our website at: <http://www.boonecountyil.org/content/iplan>.

Domain 2: Investigate

Our Environmental Health Center identifies and investigates potential sources of environmental illness or harm within the community. The goal is prevention and containment of disease, illness and injury to the public. Food inspectors help to prevent food borne illness and ensure public safety through inspection of the more than 300 restaurants, retail food locations, and community events in Boone county including all booths serving food at the Boone County Fair. Inspectors also provide well and septic inspections to protect the water supply.

BCHD investigates diseases occurring in Boone County that are deemed reportable by CDC and IDPH based on their severity and potential to spread in the community. BCHD staff work closely with health care providers and the Illinois Department of Public Health (IDPH) in this process. In addition, the staff conducts monitoring and surveillance activities to further protect the community. Due to an outbreak in surrounding states, staff offered a webinar to community partners as well as an immunization clinic at the Capron Food Pantry to prevent the spread of Hepatitis A. Staff also assisted in investigation and prevention of the Synthetic Cannabinoid crisis.

The TB program at the Boone County Health Department monitors and reports any activity within Boone County and provides TB testing to the public and for employers. Public health nurses work closely with IDPH and medical providers to help assure proper follow-up treatment and testing. In addition, BCHD provides TB prevention education to further protect the public.

Domain 3: Inform & Educate

The Boone County Health Department strives to provide accurate and reliable information about how to protect and promote individual and family health. Through our website, Facebook, Twitter and Instagram we make available information about healthy behaviors, such as good nutrition, hand washing, and the importance of health screenings. We provide accurate and timely information in the case of particular health risks, such as the unusual occurrence of coagulopathy associated with cannabinoid use and the multi state Hepatitis A outbreak. In these two cases it was necessary to gather additional information about the health issue to provide targeted messaging in a manner and format that effectively reached the affected population. We provided public health education on a variety of topics to a wide range of groups including diabetes self management, tobacco cessation, breastfeeding support, larvicide application and groundwater protection. We gave Public Health 101 presentations to nursing students at Rock Valley College, Northern Illinois University, Rockford University and Rasmussen College.

Foodborne illness (FBI) continues to be a major public health issue nationwide. During 2018 we posted numerous food recalls associated with everything from E-coli in lettuce to salmonella in beef and turkey. Staff works continuously to reduce the FBI incidences in Boone County through ongoing efforts to correct /enforce, and promote sanitary awareness during food handling. Food education workshops were offered by BCHD to all Boone County food establishments. These well attended workshops helped inform Boone County food service workers on safe food practices and highlighted the new codes and regulations.

Domain 4: Community Engagement

The Boone County Hunger Coalition, coordinated by the Boone County Health Department, is a collaborative network of interdisciplinary stakeholders that are committed to ensuring continuity of services, providing a forum for addressing food insecurity, increasing awareness and providing education on the issue of hunger and food insecurity in our community. Over the summer of 2018, a student intern worked with the coalition to update their Strengths, Weakness, Opportunities and Threats, (SWOT) analysis and developed a Food Security Plan now being used to implement county wide initiatives to address the Food Insecurity and Poverty needs in the community.

The Centers for Disease Control has declared that the United States is experiencing an opioid-induced “public health epidemic” and Boone County is no stranger to the effects of this crisis. The fatal overdose rate in Boone County was higher than the state average throughout the past year. During 2018, the Boone County Health Department continued to facilitate the Boone County Behavioral Health Task Force Meeting with many participating partners including local city and county employees from law enforcement, emergency response, public health, county jail, probation, and the court system, as well as representatives from our regional health systems, Rosecrance, and Remedies.

This group has completed a strategic plan and Sequential Intercept Map to address the behavioral health needs of our population as well as an organized interdisciplinary response to the Opioid Epidemic.

Domain 5: Policies & Plans

Health departments play important roles in preparing for and responding to disasters, including preventing the spread of disease, protecting against environmental public health hazards, preventing injuries, assisting communities in recovery, and assuring the quality and accessibility of health and health care services following a disaster. Disasters include: natural disasters (such as floods, earthquakes, and tornadoes), manmade or technological disasters (such as bridge or building collapses, nuclear accidents, and chemical releases), and terrorism (such as anthrax or other biological terrorism, chemical terrorism, radiological/nuclear terrorism, or bombings). In 2018 BCHD restructured our Pandemic Influenza Plan and updated our Strategic National Stockpile Plan. Both these plans are annexes of the All Hazards Emergency Operations Plan that BCHD maintains. This plan is public health specific and addresses emergency operations for the entire population (including special needs and vulnerable populations). Its purpose is to coordinate and communicate with other agencies and organizations to work with the community in an emergency to withstand and recover from an emergency event.

Another important role for health departments is influencing the adoption of effective public health policies and practices by being a resource for science-based public health information. This year BCHD played a pivotal role in the enactment of a Tobacco Retail Licensing Policy within the City of Belvidere.

Domain 6: Public Health Laws

The Center for Natural and Built Environments conducts regulatory programs to help ensure safe food is served at local establishments, private on-site wastewater systems properly dispose sewage, and safe drinking (potable) water is provided by new and existing water wells. In addition to these public health core regulatory programs, the Center for Natural and Built Environments also enforces local and state laws related to nuisance control, tanning and body art facilities.

Permits are issued and inspections are performed for compliance with the State Food Sanitation, Private Sewage Disposal and Private Water Well codes. In addition, public requests for service are investigated and enforcement action taken if violations of county or state health codes are identified. Consultations with the public concerning these and other codes as well as general public health topics are ongoing. Not only do we work with individual restaurants and property owners you'll also see us out keeping the public safe at major events throughout the year, such as the Boone County Fair, Fall Diddley and Hometown Christmas.

In addition, staff participated in an Alcoholic Liquor Enforcement pilot program training provided by the Illinois Liquor Control Commission. This training will allow designated staff to complete liquor compliance checks on identified establishments in Boone County. Twice this year, we conducted Tobacco Compliance Checks at 34 city and county retail stores with the Belvidere Police Department and the Boone County Sheriff's office. In the first round of checks, 31 retailers did not sell to the underage youth, giving us an 91% compliance rate and in the second round of checks 32 retailers did not sell to underage youth, giving us a 94% compliance rate.

Domain 7: Link to / Provide Care

BCHD's WIC Peer Counselor Program continues our partnership with SwedishAmerican Hospital Mother Baby Unit staff to provide direct support services to postpartum mothers and their newborns. This program assists moms in planning for breastfeeding support upon discharge. To date, we have served over 134 new moms and their babies.

BCHD remained engaged and involved in talks regarding the further development of local transportation systems in Boone County.

We make Flu vaccine available to the community and accept all forms of Medicaid and insurance. We also partner with SwedishAmerican Medical Center Belvidere to provide free flu vaccine to our underserved and uninsured population. Throughout the year BCHD held numerous free Blood Pressure Screening events at the Salvation Army. During these events, as well as in our WIC and FCM clinic, we link people to primary care providers and refer clients to additional medical and social services. BCHD has a staff member on the City of Belvidere's Bridge Committee that promotes outreach and support to all segments of the community with a special emphasis on outreach to the Hispanic population.

BCHD has consistently produced some of the highest redemption rates for the Farmers Market Nutrition Program. This program connects WIC clients with authorized farmers to redeem their coupons at a market or roadside stand.

Domain 8: Competent Workforce

BCHD is proud to have further developed its Teaching Health Department program, working hard to develop the workforce of tomorrow. BCHD continues its strong collaborations with several regional nursing and medical schools including Rock Valley College, Rockford University, OSF School of Nursing, Northern Illinois University, Rasmussen College, and UIC Rockford School of Medicine, offering clinical rotations through our department for these students as well as a Public Health 101 overview session, a presentation that BCHD staff take onsite to these schools and present as part of their established coursework and curriculum. BCHD invites students in public health, nursing, dietetics, and related fields to intern, volunteer, and create projects that ultimately provide manpower and fresh perspectives to community challenges. At the same time they acquire first-hand knowledge of the changing role of health departments in the public health system.

The resulting staff/student 'think tank' is mutually beneficial as it allows students to grow academically, while providing much needed resources for daily operations, and time for necessary staff development. Academic partnerships fulfill accreditation requirements while overcoming barriers imposed by funding, providing real-world understanding of public health for the next generation of leaders in healthcare. Student outreach projects overseen by the Health Department also provide new skills, new perspectives and needed advocates for public health's changing role.

Domain 9: Quality Improvement

BCHD is one of eight counties in Illinois who were selected to take part in a Quality Improvement Learning Collaborative through the Illinois Public Health Institute. The project we chose was centered on our Food Program and involved setting an aim statement, data analysis, root cause examination, control and influence breakdown and selection of improvements to test. Environmental staff has been working with our GIS department to map all restaurant locations in the county. We are now able to sort by risk category and geographic location. Using this new tool, we developed a Food Program Plan for 2018 to better streamline inspection processes and procedures.

In our effort to continuously strive for better quality delivery of our services, we began planning to transition from paper to electronic food inspections. Boone County IT staff has been instrumental in getting us ready by setting up three tablets with applicable programs, recreating inspection forms (with signature capabilities) and creating e-mail accounts. Next steps will be checking our processes and after making any necessary changes to the plan we expect full implementation to follow.

This past year BCHD created a task force to update our HIPAA Policy and Procedures. The Risk Assessment that the department is conducting is made up of three components: Administrative Safeguards, Technical Safeguards and Physical Safeguards. By going through this process BCHD will assure that we are continuing to safeguard our clients' confidential health information.

Domain 10: Evidence Based Practices

BCHD staff submitted abstracts and were accepted to present related to research and best practices at our local public health department for the Public Health 3.0 Workforce Development Conference, the Illinois Public Health Association's (IPHA) 77th Annual Conference, and the Public Health and Health Care Coalition 2018 Preparedness Summit. Ellen Genrich is included as an author of "Fostering Inter-Professional Education Through a Multidisciplinary, Community-Based Pandemic Mass Vaccination Exercise" article published in March in the American Journal of Public Health describing the four-year experience of a novel, health professional student-driven, community-based, pandemic planning exercise. BCHD participated in a Robert Wood Johnson Foundation-funded national qualitative research project which included a cohort of mentor health departments who designed a toolkit and Learning Lab curriculum to assist local health departments considering a transition from clinical to population-based strategies. Additionally, Amanda Mehl was selected to be lead mentor with the IPHA graduate research intern and completed work on a document discussing the public health impacts of gun violence.

BCHD, Boone County Administration, The Workforce Connection, and Growth Dimensions are representatives of the Boone County Team participating in the UIC Center for Healthy Work's Healthy Communities through Healthy Work (HCHW). The Healthy Work Collaborative to Map Action for Social Change gave organizations the opportunity to explore aspects of unhealthy work and identify steps they can take to make healthy work a reality for the communities they serve. The Boone County Team worked in 2018 to develop a strategic plan and created a roadmap for research recommendations for Phase II of the project slated to begin in early 2019.

Domain 11: Management

In an effort to proactively align our mission and vision with the region and the state, BCHD continues to participate in regional and statewide task forces, coalitions and advisory councils. Examples of such memberships include WIC Region Two quarterly coordinators meetings, the Illinois Public Health Association Executive Council and the Northern Illinois Preparedness and Response Coalition Executive committee. Most recently BCHD joined The Northern Illinois Public Health Consortium (NIPHC), a point of collaboration and exchange of information for local health departments in the northern Illinois region to promote health, prevent disease and protect communities. The consortium also works to raise public awareness, build constituencies and shape legislation and policies that affect public health in the region.

In 2018 we applied for a variety of technical assistance and leadership development grants in order to implement the merged action cycles of the IPLAN and County Comprehensive Plan. BCHD was the recipient of a Public Health 3.0 award for best practice in local public health in Illinois through the Illinois Public Health Association (IPHA).

IPHA President, Cathy Ferguson, presented Amanda Mehl with the President's Recognition Award at this year's IPHA Annual Conference. This special recognition award is given to someone that has been a true public health advocate and made significant contributions to the overall public health system in Illinois.

Domain 12: Governance

The Boone County Health Department received routine audits this year from the County Auditors, the Illinois Department of Public Health and the Illinois Department of Human Services for several of its programs. BCHD's Financial Diversity Strategic Plan Subcommittee and the BCHD management team worked hard on adjustments and updates to several Boone County Personnel Policies. A new accrual system was proposed and passed for BCHD to use to track and monitor employee paid time off in Paylocity. BCHD management prepared a cost analysis and fee adjustment proposal for the Food Protection, Potable Water, and Private Sewage Programs, presenting it to the Board of Health and the County Board on several occasions in 2018. This was part of a several phase process that BCHD has been undertaking to update the Boone County Code related to Environmental Health Enforcement.

BCHD monitored several pieces of legislation this year that had a direct impact on public health. In August, Governor Rauner vetoed the Tobacco 21 bill that all public health supported. Public health encourages restriction to the access of tobacco that causes such harm and injury to people in our State and has been working closely with the American Lung Association to take action on this legislation. Also in August the Nursing Mothers in the Workplace Act was amended to allow for more flexibility in taking breaks during company time to express breastmilk.

Center for Natural and Built Environment Data

		2018 YTD	2017
Food			
	New Plan Review	6	9
	Existing Plan Review	4	6
Permits			
	High Risk - Fixed Site	103	102
	Medium Risk - Fixed Site	118	95
	Low Risk - Fixed Site	62	73
	Mobile/Temp/Vendor-All Risks	239	248
Inspections			
	Inspections - Fixed Site	333	380
	Follow up Inspections	22	14
	Special Event Mobile/Temp	223	206
	Complaint Investigation	48	24
	Referred to Court	0	1
Potable Water			
	Well Permits	51	39
	New Well Inspections	33	16
	Water Samples Analyzed	261	269
	NCPWS Inspection	19	24
	Well Seal Permits	18	16
	Comp. Well Inspection	5	7
	Comp. Well Seal	2	11
	Referred to Court	0	0
Sewage Disposal			
	New Septic Permits	29	23
	Septic Repair Permits	10	18
	Septic Alteration Permits	1	9
	Septic Installation Inspections	32	35
	Sewage Complaint Investigation	4	4
	Soil Bores Reviewed	43	35
	Land Application Permits	2	5
	Operator Permits	250	230
	Referred to Court	0	0

		2018 YTD	2017
Nuisance			
	Refer to Other Agency	11	20
	Inspections	16	21
	Follow Up Inspections	4	13
	Corrective Orders Issued	5	14
	Cases Closed	49	50
	Referred to Court	0	3
Real Estate Evaluation			
	Wells	103	140
	Septics	91	116
West Nile Virus Prevention			
	Sentinels Tested (total pools)	57	46
	Human Cases	0	0
Plan Review			
	Plats, Preliminary & Adjusted	0	0
	Lots	0	0
	Plats, Final	0	0
	Total Lots	0	0
	Revised Septic Plan	1	4
	Other Reviews (additions, etc.)	77	85

Center for Health Equity and Access to Care Data

		2018	2017
Maternal Child Health		* This data would report as a duplicated figure.	
Family Case Management			
	Infants (≤ 12 months)	*	*
	Pregnant women	*	*
	Home visits	32	78
	Office visits	2795	3089
	Breastfeeding clients (total)	*	*
	Total caseload	*	*
APORS			
	New referrals	20	18
	Encounters/Assessments	67	60
	Denver Screenings / ASQs	67	56
	Total caseload (≤ 24 months)	*	*
WIC			
	New clients	858	961
	WIC Education attendance	1025	1163
	Individual education	722	671
	Certification	1130	1274
	Food instruments (# of clients)	3960	4280
	Total caseload	*	*
HealthWorks			
	Total caseload	*	*
	New referrals	15	9
	ACR's Completed	32	43
	Encounters / Assesments	32	42
Tests & Screenings			
	Blood Lead Tests	345	310
	High Blood Level Follow-up	48	44
	Hearing Screenings	176	154
	Vision Screenings	165	117
	School Physicals	12	14
	Gonorrhea/Chlamydia Test	80	85
	Syphilis Test	36	32
	HIV Test	36	32
	DNA Screenings	32	32
	Chronic Disease Screenings	28	23
	Hepatitis C Test	15	11
	STI Treatment	44	50
	Pregnancy Test	9	28

		2018	2017
Vaccinations			
Vaccine for children (VFC)			
	DTaP	13	29
	DTaP/IPV/Hep B	19	33
	Dtap-Hib-IPV *	13	10
	(HPV)	23	41
	Hep A *	22	41
	Hep B	20	12
	Hib	31	36
	Influenza	114	57
	IPV	11	13
	Meningococcal	60	106
	MMR	16	17
	MMR/Varicella	18	19
	PCV 13	35	53
	Pneumococcal Conjugate	3	0
	Rotovirus	11	27
	Td	0	0
	Tdap	27	41
	Varicella	22	23
	Dtap IPV	13	19
	Others	0	0
Adult vaccinations			
	Hep A	3	4
	Hep A + Hep B	3	6
	Hep B	8	10
	Influenza	499	509
	MMR	2	27
	Meningitis	0	3
	Pneumococcal	10	13
	Shingles	0	0
	Td	0	0
	T-dap	20	33
	Other	0	1

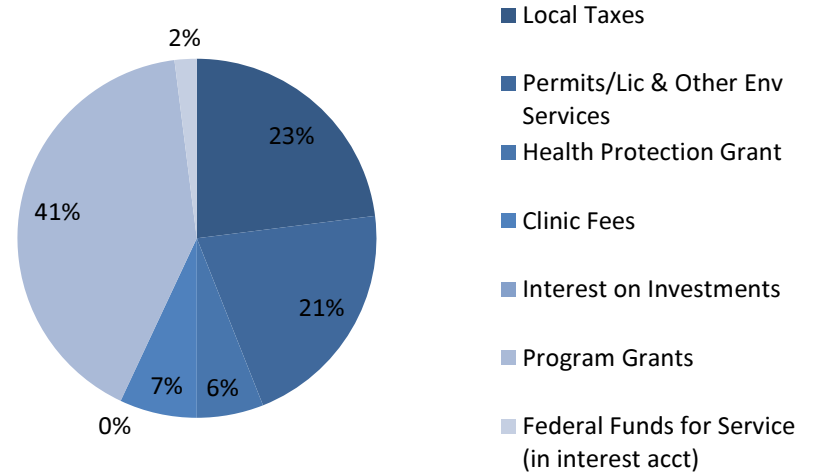
Center for Health Equity and Access to Care Data

		2018	2017
Communicable Disease Control			
Reportable Diseases			
Botulism, West Nile Virus, MRSA <61 day	Outbreak investigation	1	6
	Suspect Case investigation	45	39
	Campylobacteriosis	7	18
	Chickenpox	1	1
	Cryptosporidiosis	4	4
	E. coli	6	1
	Giardiasis	0	0
	Hepatitis A	0	0
	Hepatitis B, acute	0	0
	Hepatitis B, chronic	3	8
	Hepatitis C, acute	0	0
	Hepatitis C, chronic	6	22
	Invasive Group A Strep.	2	3
	Invasive Strep. Pneumonia	0	0
	Lyme disease	7	12
	Meningitis, Viral	0	0
	Meningitis, Bacterial	0	0
	Pertussis	3	2
	Rabies Human Contact	6	5
	Salmonellosis	10	11
Shigellosis	0	0	
Others	11	12	
Sexually Transmitted Infections			
	Chlamydia	132	89
	Gonorrhea	23	14
	HIV/AIDS	0	0
	Syphilis	3	2
Tuberculosis Control			
	New active TB case	3	0
	Ongoing DOT	1	1
	New Latent TB	3	7
	Latent TB Treatment	1	1
	Tuberculin skin tests (TST)	413	68
	T-Spot	34	9

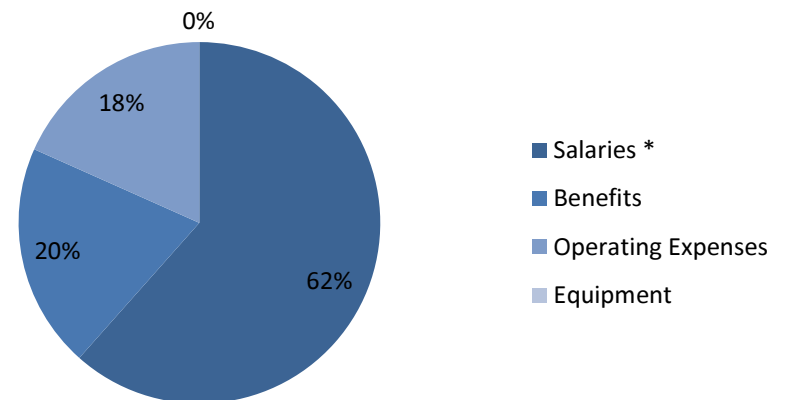
Investment in Public Health Data

Revenues	2018	2017
Local Taxes	\$255,086	\$235,470
Permits, Licenses, etc.	\$237,835	\$179,623
Health Protection Grant	\$67,375	\$63,201
Clinic Fees	\$80,077	\$72,073
Interest on Investments	\$2,650	\$1,335
Program Grants	\$464,104	\$400,181
Federal Funds for Service	\$22,085	\$18,070
Total Revenue	\$1,131,229	\$969,953
Expenditures	2018	2017
Salaries	\$682,444	\$727,783
Benefits	\$222,834	\$249,487
Operating Expenses	\$203,212	\$168,097
Equipment	\$ 0	\$6,752
Total Expenses	\$ 1,108,490	\$1,152,120

2018 Revenues



2018 Expenditures



Board of Health Members

Jim Cox, President

Dr. James Phoenix, M.D., Vice President

Barbara Thrun, Treasurer & Secretary

Sherry Branson, County Board Representative

Dr. Dennis Corcoran, M.D.

Jen Jacky

Dr. Dan Lendman D.V.M.

Kyle Marcussen

Marshall Newhouse

Dr. Pacita Pumilia, D.D.S.

Meredith Williams

Our mission is to serve our community by preventing the spread of disease, promoting optimal wellness and protecting the public's health.

Our vision will guide and inspire the community to enjoy a high quality of life by:

- Redefining the role of public health delivery
- Creating a culture of health
- Advancing health equity
- Building strong community engagement and collaboration
- Attaining national Public Health Accreditation



Public Health

Prevent. Promote. Protect.

1204 Logan Ave.,
Belvidere, IL 61008
Phone 815-544-2951
Fax 815-544-2050
www.boonehealth.org



www.facebook.com/BooneCountyHealth
twitter.com/BooneCoHealth

Health Department Staff

Amanda Mehl, Public Health Administrator / FOIA Officer

Kari Kampen, Director of Departmental Operations / FOIA Officer

Francine Alcantara, Maternal/Child Health Programs Nurse Supervisor

Esmeralda Avila, Health Center Intake Associate

Amayrane Diaz, Public Health Nurse

Sonia Eichstaedt, Communicable & Chronic Disease Nurse Supervisor

Chris Elias, Office Coordinator

Mariela Feliciano, Maternal/Child Health Nurse Case Manager

Ellen Genrich, Emergency Response and Health Promotion Coordinator

Michelle Gibson, Environmental Inspector

Kory Hintzsche, Environmental Inspector

Sandi McQuinn, Office Assistant

Sue Schweitzer, Maternal/Child Health Nurse Case Manager

Patricia Velasquez, Health Center Intake Associate

Bobbie Eichsteadt, Custodial

Mary Taylor, Custodial

Jim Mulcahy, Environmental Inspector