



THE 2019 ANNUAL REPORT FOR BOONE COUNTY HEALTH DEPARTMENT

Public Health
Prevent. Promote. Protect.



MISSION STATEMENT

Our mission is to serve our community by preventing the spread of disease, promoting optimal wellness & protecting the public's health.

OUR VISION

Our vision will guide and inspire the community to enjoy a high quality of life by:

- Redefining the role of public health delivery
- Creating a culture of health
- Advancing health equity
- Building strong community engagement and collaboration
- Attaining national Public Health Accreditation

CONTENTS

2	Message from Public Health Administrator
3	Organizational Chart
4	Domain One & Two
5	Domain Three & Four
6	Domain Five & Six
7	Domain Seven & Eight
8	Domain Nine & Ten
9	Domain Eleven & Twelve
10	Center for Natural & Built Environment Data
11	Center for Health Equity & Access to Care Data
12	Continued: Center for Health Equity & Access to Care Data
13	Financial Statement
14	Board & Staff Members

MESSAGE FROM THE PUBLIC HEALTH ADMINISTRATOR



Amanda Mehl, Public Health Administrator

Dear Partners,

2019 has been a dynamic and energizing year for the Boone County Health Department. From vector borne disease to the vaping crisis, cannabis to Coronavirus our team worked diligently to protect the public, prevent the spread of disease, promote health and wellness, and deliver the ten essential public health services to the almost 54,000 individuals in Boone County.

From an operational perspective, we were able to capitalize on our fiscal operations, running more efficiently as well as request and receive more federal match dollars than anticipated. This has allowed us to build up our reserve fund to better prepare for public health emergencies in the future.

We tackled the final restructuring of our organizational chart, officially

moving from a hierarchical model to a venn diagram with overlapping centers covering environmental and clinic-based services as well as strategic planning, emergency preparedness, and performance management.

We brought on several new staff who have embraced this new model and are actively engaged in cross training and covering tasks across program boundaries which has aided in breaking down older departmental silos. Our departmental strategic plan work groups continued to meet and move our four strategic goals and 13 strategic initiatives forward. Highlights include staff training on Psychological First Aid, Mental Health First Aid, Conflict Resolution, the development of our Trauma Action Committee (TAC) and several state and national level presentations on our community trauma work. We have also streamlined our accounting processes with the County Treasurer's office written several new departmental policies regarding travel and equipment usage, and reviewed our fee structure.

We continue to embrace Public Health (PH 3.0), a concept where local health departments serve as Chief Health Strategists for their communities, focusing on the development of cross sector collaboration as well as data and resource sharing to address social, structural, and spatial determinants of health.

Our biggest push was to further develop the Boone County Drug Prevention Coalition and the Boone County Behavioral Health Task Force, our two community-based

stakeholder groups who are actively working to carry out the Behavioral Health Priority of our Illinois Plan for Local Area Needs (IPLAN). The Drug Prevention Coalition spent their year training their members on coalition development and prepared education messaging and workshops for youth and parents about the risks of vaping. The Task Force wrote five grants and successfully received almost \$600,000 from the Federal Department of Justice Bureau of Justice, Assistance Comprehensive Opioid Abuse Recovery grant for our local community.

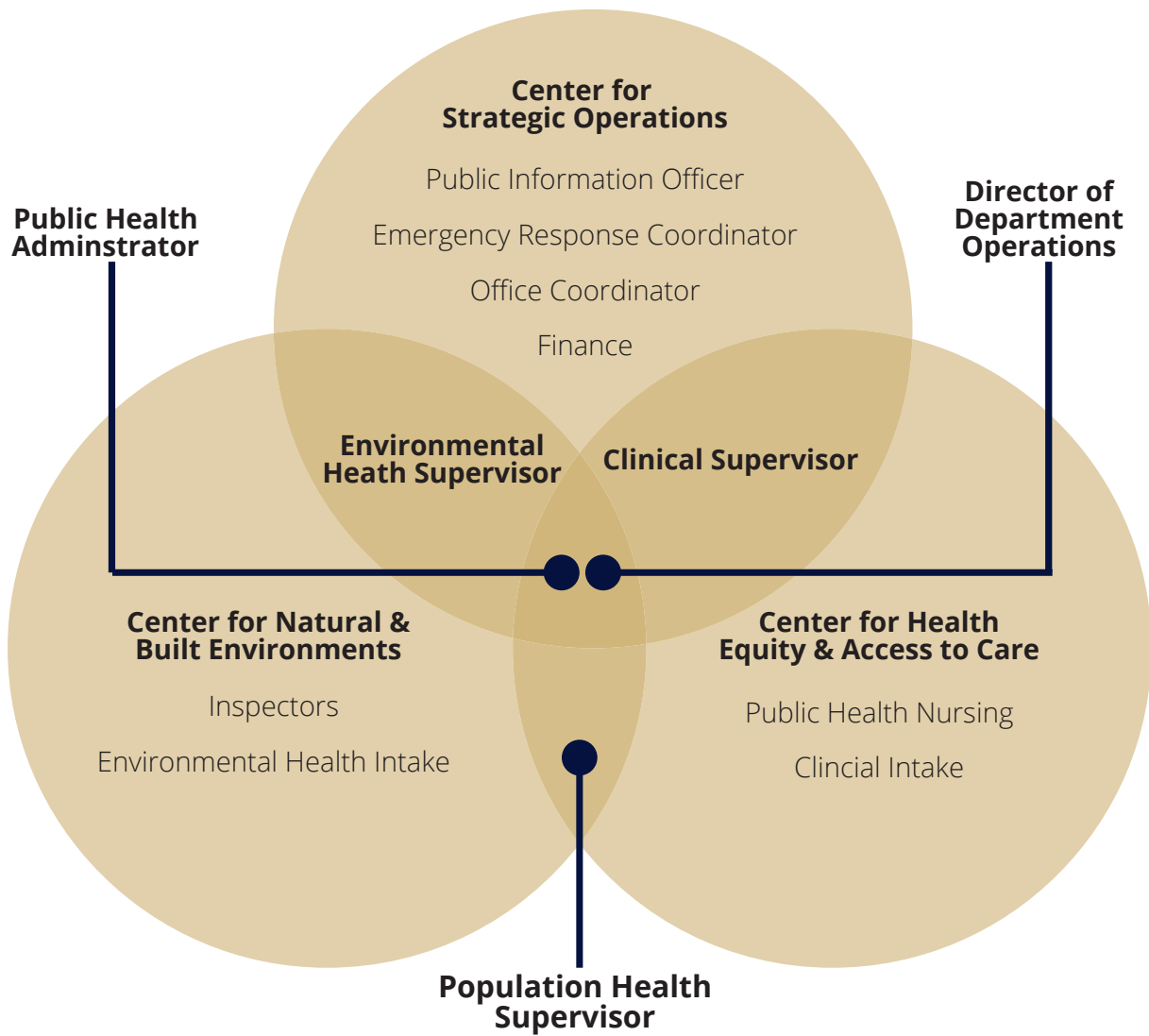
In December, we were honored with a visit from Dr. Ngozi Ezike, MD, the Director of the Illinois Department of Public Health. She delighted in hearing our successes and listened intently as we shared many of the challenges of being a small local health department in rural Illinois. During the visit she commended the staff for a job well done and believes that what we are building should be a model for other small health departments across the state as to how we can do business better.

On the following pages, I invite you to read more about what the department has accomplished over the past year.

Respectfully,

A handwritten signature in black ink, appearing to read 'Amanda Mehl'. The signature is fluid and cursive, written over a white background.

2019 HEALTH DEPARTMENT ORGANIZATIONAL CHART



The Boone County Health Department (BCHD) incorporated the PH 3.0 concept into departmental operations by redesigning its organizational chart and departmental reporting structure as follows: Once a typical hierarchical model, the new chart reflects staffing and program structure designed around the core functions of public health and public health workforce competencies. Job descriptions have been re-written to reflect this model and staff from historically separated divisions within the department now work on cross-sectional teams to gain greater understanding of each other's responsibilities. Traditional clinic and environmental staffing roles are now merged allowing departmental staff to be better equipped to tackle overlapping public health issues.

DOMAIN ONE

MONITOR HEALTH

One of our jobs as a health department is to monitor the health status of populations in order to identify trends and to target health resources. We use this information for public health assessment and planning. This then informs evaluating and decision making to affect changes in health over time in Boone County. Every year, BCHD monitors seasonal influenza activity locally and then compares this to statewide and national trends. We receive reports on positive rapid influenza tests regularly from providers in Boone County and Daily Absenteeism Data from both District 100 and 200 students and staff who were absent with Influenza Like Illness (ILI). Nationally, as well as in Boone County, influenza activity during the 2018–2019 season began to increase in November and remained at high levels for several weeks during January–February 2019. The season had moderate severity based on levels of outpatient ILI, hospitalization rates, and proportions of pneumonia and influenza-associated deaths. CDC estimates that the burden of illness during the 2018–2019 season included an estimated 35.5 million people getting sick with influenza,

16.5 million people going to a health care provider for their illness, 490,600 hospitalizations, and 34,200 deaths from influenza. (<https://www.cdc.gov/flu/about/burden/2018-2019.html>)

In 2019, the United States experienced nationwide outbreaks of Measles, Hepatitis A, Legionnaires Disease, and E-cigarette, or vaping, product use associated lung injury (EVALI). The Illinois Department of Public Health (IDPH) declared a statewide Hepatitis A outbreak in December 2018. The statewide outbreak was spread through person to person contact. IDPH made large numbers of vaccine available for local health departments to target specific at-risk groups which included men who have sex with men (MSM), persons experiencing homelessness, persons who use drugs, and/or persons who are currently or were recently incarcerated. BCHD worked with our local law enforcement and community partners to identify areas in Boone County where individuals at high risk were located to offer free Hepatitis A vaccine.

DOMAIN TWO

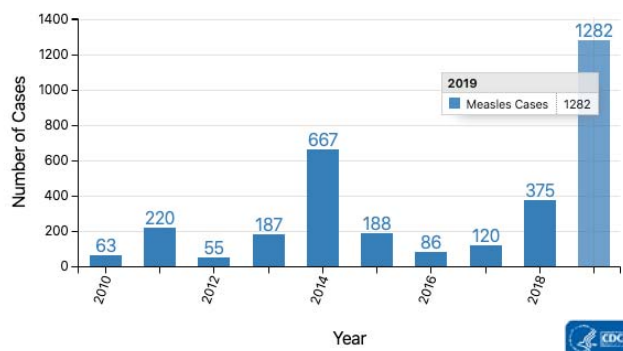
DIAGNOSE & INVESTIGATE

Another important role is to diagnosis and investigate health problems and hazards in the community including potential sources of environmental illness. Public Health Teams of BCHD staff are available and prepared to combat natural disasters, severe weather, disease and/or food outbreaks, bioterrorism, mass casualties and chemical emergencies with the goal of prevention and containment of disease, illness and injury to the public.

In 2019, we focused on staff development for responding to foodborne disease outbreaks. Staff attended a four-part Food Borne Disease Outbreak Investigation Webinar series with topics that included effective interview strategies, disease and environmental data gathering, collecting environmental evidence and using data analysis to determine the source of a food borne illnesses.

In addition to the communicable diseases listed on page 14, there were confirmed cases of Influenza ICU Admission, Streptococcal Disease, Cryptosporidiosis, Legionellosis, and Haemophilus Influenza. Staff also investigate 35 probable cases of communicable disease which included illnesses such as rabies, Salmonella, Measles, and Yersiniosis.

Number of Measles Cases Reported By Year
2010-2019*(as of January 31, 2019)



DOMAIN THREE INFORM & EDUCATE

Once public health priorities have been established through monitoring and investigation of health problems in the community, BCHD then identifies educational activities that will promote improved health. It is important that health information, health education, and health promotion activities are designed to help reduce health risk and promote improved health in our community.

In response to the opioid epidemic, BCHD and Sinnissippi Center, Inc. partnered to host NARCAN training sessions open to the community and free to the public. These free training sessions helped the community learn about the signs and symptoms of an opioid overdose and how to use the lifesaving antidote naloxone (NARCAN). To date we have trained more than 400 people during these events.

Through our website, Facebook, Twitter and Instagram we make available information about healthy behaviors, such as good nutrition, hand washing, and the importance of health screenings. We provide accurate and timely information in the case of particular health risks, such as the unusual occurrence of severe lung illnesses tied to vaping. Youth were disproportionately affected by this illness so targeted messaging on the dangers of vaping was developed to reach this group.

We gave Public Health 101 presentations to nursing students at Rock Valley College, Northern Illinois University, Rockford University and Rasmussen College in an effort to expand student's knowledge of the public health role in protecting the community and preventing the spread of disease.

DOMAIN FOUR

COMMUNITY ENGAGEMENT

BCHD mobilizes our numerous community partnerships to aid us in identifying and solving health problems. One of the components of this service is building coalitions to utilize the full range of available resources. BCHD routinely convenes and facilitates partnerships that undertake defined health improvement projects to assist our partners in tackling community challenges and capitalizing on our assets.

One of these is the Boone County Hunger Coalition that organized the 2nd Boone County Poverty Summit in April 2019. Close to 70 volunteers, community partners and members of the public gathered to participate in the Poverty Summit.

Several staff from our Population Health Focus Committee were able to attend a training at Belvidere High School on cultural bias. The professional development training entitled, "Cultural Competency and Implicit Bias" provided an opportunity for staff to explore concepts related to bias through discussion and hands-on activities.

Our participation in this training will increase our awareness of unconscious bias and assist in developing a more equitable public health framework.

We had another successful Farmers Market Wellness Fair in 2019. We had over 40 booths from local business and organizations, plus several new vendors such as Ida Public Library and Oak Street Health. The Blood Mobile met their goal of 25 donors, including 13 new donors.



DOMAIN FIVE

DEVELOP POLICIES AND PLANS

It has long been known that policies can be effective in modifying human behavior and reducing negative health outcomes. In addition to policies that can support health efforts, laws can reduce negative health outcomes.

The Population Health Workgroup of the Boone County Strategic Plan has created the Trauma Action Committee as a sub committee to address the trauma work being done as part of their strategic initiative focused around Health Equity. Their mission is to promote optimal trauma informed practices through staff training, collaborations with external partners and to promote community awareness and engagement. Their vision is for BCHD to become a trauma informed health department.

Additionally, BCHD serves on the Community Health Assessment and Improvement Collaborative Partner Steering Committee.

This is a new initiative guided by the Winnebago County Health Department and the Rockford Regional Health Council to share regional data and develop a regional community health assessment and improvement planning process.

An amendment to the Boone County Tobacco Ordinance to include Electronic Cigarettes was drafted in January by staff with input from the Boone County State's Attorney. The proposed changes were supported by the membership of the Boone County Drug Prevention Coalition and the Board of Health. Staff then presented to the Health and Human Services Committee in February 2019 where the vote was unanimously in favor of the proposed changes. Ordinance 19-13 Amending Chapter 38, Article IV of the Boone County Code Regulating the Use of Alternative Nicotine Products was passed unanimously by the full Boone County Board later that month.

DOMAIN SIX

ENFORCE LAWS

It is an important function at BCHD to ensure that individuals and organizations comply with existing laws and regulations as a means to safeguard the overall health and safety of the general public. BCHD enforces many county and state codes that deal with the protection of drinking water, mandated childhood immunizations, facilitating timely follow-ups in the event of hazards and outbreaks of exposure-related diseases, ensuring food safety, and enforcing housing and sanitation codes.

Not only do we work with individual restaurants and property owners, you'll also see us keeping the public safe at major events throughout the year, such as the Boone County Fair, Fall Diddley Buchanan Street Stroll and Hometown Christmas.

BCHD holds a grant from the Illinois Department of Human Services of Substance Use Prevention and Recovery to do periodic checks on retail establishments to assure our youth are not accessing tobacco through retail outlets. On three occasions this year, we conducted Tobacco Compliance Checks at 34 city and county retail stores with the Belvidere Police Department and the Boone County Sheriff's office. In the first and second round of checks, no retailers sold to the underage youth, giving us a 100% compliance rate. In the third round of checks one retailer sold, giving us a 97.1% compliance rate.

DOMAIN SEVEN

LINK TO AND PROVIDE CARE

Having access to care when it is needed is important in helping individuals prevent and avoid unfavorable health outcomes and medical costs. At BCHD we work to identify populations that face barriers to accessing health services and address their personal health needs. We assure the linkage of these populations to appropriate health services by coordinating provider services, and developing and implementing interventions that address the barriers they face in attempting to access care.

BCHD staff participated in the City of Belvidere's Bridge Committee Meeting promoting outreach and support to all segments of the community with a special emphasis on outreach to the Hispanic population. One of the focuses has been the "Handle with Care" Initiative. This initiative is tailored to reflect the needs and issues affecting children experiencing trauma and is a result of a collaborative effort of key stakeholders and partners.

The goal is to prevent children's exposure to trauma and violence, mitigate negative effects experienced by children's exposure to trauma, and to increase knowledge and awareness of this issue.

BCHD assisted the Rockford Mass Transit District and the Region 1 Planning Council with promoting two transportation surveys to local officials, staff in local public/private sector offices, and the general public regarding transportation and long-range planning in our region. This analysis and development process will help us identify the transportation needs, investment priorities, and other factors that will shape the transportation network over the next 20 – 30 years in Boone, Winnebago, and Northern Ogle Counties.

DOMAIN EIGHT

ASSURE A COMPETENT WORKFORCE

BCHD staff meet the health needs of the population and maintain public health workforce standards (licensure and credentialing processes). Continuous quality improvement methods and long-term learning opportunities for our public health workforce members is a priority at BCHD.

Students in public health, nursing, dietetics, and related fields are invited to intern, volunteer and create projects that ultimately provide manpower and fresh perspectives to community challenges. We welcomed four interns this past year. Three were in the office in person, and one worked remotely from Washington state. A graduate student getting a dual masters planning and public health program in University of Washington School of Public Health worked remotely on our Community Recovery Plan which is part of the Public Health Emergency Preparedness Grant. Another graduate student of public health getting her MPH at Northern Illinois University worked on our Performance Management Plan and updated our Workforce Development Plan.

An undergraduate student at Augustana University studying public health and Spanish worked on coordinating the annual Farmers' Market and Wellness Fair. Another undergraduate student, who is interested in public health and goes to school at UW Whitewater, worked on some policies and procedures for our office and for the Illinois Public Health Association and Illinois Public Health Nurse Administrators. During their internships they acquire first-hand knowledge of the changing role of health departments in the public health system.

Academic partnerships such as these fulfill accreditation requirements while overcoming barriers imposed by funding and provide real-world understanding of public health for the next generation of leaders in healthcare. Student outreach projects overseen by BCHD also provide new skills, new perspectives and needed advocates for public health's changing role while providing much needed resources to BCHD.

DOMAIN NINE

QUALITY IMPROVEMENT

BCHD's Public Health Accreditation Board (PHAB) Steering Committee re-visited the accreditation readiness checklist at the beginning of the year. We wanted to determine our progress towards an official application to PHAB.

Work then began on the BCHD Quality Improvement and Performance Management Plan. The PHAB committee took the Public Health Foundation's - Performance Management Self-Assessment in April to better gauge where the department needs to improve.

BCHD completed a Central intake Quality Improvement Project, allowing the department to focus more on streamlining processes and

enhancing customer service in both the environmental and health centers. A total of 19 competencies were written and staff are using these competencies to cross train.

BCHD's Public Health Administrator attended the Public Health Accreditation Board's (PHAB) Site Visitor Training in Alexandria, VA in April. She can now assist in auditing other health departments across the country as they apply for accreditation. This process will assist us to lead BCHD through their own accreditation process.

DOMAIN TEN

RESEARCH

Through research, the health and health care problems that individuals face can be better understood, and therefore be better and more appropriately addressed given the evidence provided by such research efforts.

The Boone County Healthy Work Collaborative officially signed the grant agreement and began Phase II of the Boone County Health Work Initiative at the beginning of 2019 with the UIC School of Public Health providing technical assistance for this project. Our intern and Project Coordinator worked on engaging local elected officials by presenting to the Health and Human Services Committee of the County Board. Focus group questions were drafted and focus groups with community members were conducted in order to discuss workplace dynamics and capture input from the community. Using networks within the interdisciplinary team to organize, five focus groups were conducted with the United Auto Workers 1268, recipients of the federal assistance program Women, Infants, and Children (WIC) at the BCHD, the Rotary Club of Belvidere, the Capron Community and a Luncheon sponsored by Growth Dimensions.

Major emerging themes from the focus groups were barriers to employment, mental and physical health, education, youth population, unemployment and wages, and employer recognition. In November, the group applied for Phase III of the project requesting a total of \$20,000 to focus on the following:

- Creating pathways for healthy work for those in precarious jobs; improving the lived experience for workers;
- Policy, systems, and environmental change;
- Multisectoral collaboration;
- Organizational readiness and capacity to address issues of precarious work.



DOMAIN ELEVEN

ADMINISTRATIVE

Strong management is needed to effectively organize, lead, and guide BCHD organization. In 2019, BCHD Public Health Administrator continued her work as the president of the Illinois Public Health Nurse Administrator's Association (IPHNA), heading up three board of director's meetings, and guiding the Membership and Development Committee to successfully host the IPHNA Annual Conference and Meeting in Springfield in May. She worked with the section leaders across the state to increase member participation and began a recruitment project to involve health departments that are new to IPHNA or who have had staff participate in the past but were not currently active or engaged.

She also sat on the planning committees for the March of Dimes Perinatal Nursing Advisory Committee (PNAC) conference in Lombard, IL in March and the 78th Annual Illinois Public Health Association (IPHA) Conference in Springfield, IL in September. She remains active with the Illinois Association of Public Health Administrators (IAPHA) and the Northern Illinois Public Health Consortium (NIPHC) where discussion in 2019 focused mainly on statewide strategic priorities, IPLAN and Local Health Department Funding, Medicaid Match Dollars for Family Case Management, HIPAA Compliance, and Recreational Marijuana.

DOMAIN TWELVE

GOVERNANCE

Amanda Mehl continues to participate on the legislative and policy committee for both the Illinois Public Health Association (IPHA) and the Northern Illinois Public Health Consortium (NIPHC). Current and future legislation pertaining to public health include Tobacco 21, the minimum wage increase, the legalization of recreational marijuana, and antibiotic regimens for Lyme Disease treatment to name a few.

Another way that BCHD participates in governance is that the Public Health Administrator and BCHD staff slip in favor of, or against, public health legislation. In 2019 slips were submitted on a variety of pieces of legislation including physical education in schools, vaping products including flavored oils, public benefits for immigrants and their families. Staff slipped in favor of a bill that would strengthen the physical education system in Illinois by requiring schools to provide a minimum of 150 minutes of P.E. per week in elementary schools and 225 minutes of P.E. per week in middle schools, a bill that would that would raise the age to purchase tobacco products, electronic cigarettes, and alternative nicotine products to 21, and a bill to create the Flavored Tobacco Ban Act. The Flavored Tobacco Act was designed to set penalties for individuals and manufactures who would sell the products illegally.

BCHD staff submitted comments in opposition to the USDA proposed rule in the Federal Register that would institute strict time limits for adults to find jobs or lose their Supplemental Nutrition Assistance and the Department of Homeland Security changes to the Public Charge Rule which was proposed to limit public benefits to immigrant families.

BCHD monitored the Firearm Dealer License Certification Act which proposed to require any gun dealer in the State of Illinois be certified by the Illinois State Police (ISP) and to provide annual training to employees, have video surveillance in gun stores, and be open for inspection by ISP and local law enforcement. The department also monitored the Gun Trafficking Information Act requiring the ISP to publish key information related to crime-related firearms and imposes penalties on individuals who fail to maintain a record of a private sale.

In October in conjunction with Fire Safety Month, fire safety and public health officials gathered at the Belvidere Fire Department to make the public aware of Illinois' new 10-year smoke detector law. The new law will require Illinois residents to replace their old smoke detectors with the type that has a long term 10-year sealed battery by the end of 2022.

CENTER FOR NATURAL AND BUILT ENVIRONMENT DATA

FOOD

	2019	2018
New Plan Review	3	6
Existing Plan Review	2	4

PERMITS

	2019	2018
High Risk - Fixed Site	87	103
Medium Risk - Fixed Site	90	118
Low Risk - Fixed Site	60	62
Mobile/Temp/Vendor - All Risks	241	239

INSPECTIONS

	2019	2018
Inspections - Fixed Site	358	333
Follow Up Inspections	9	22
Special Event Mobile/Temp	228	223
Complaint Investigation	30	48
Referred to Court	1	0

POTABLE WATER

	2019	2018
Well Permits	14	51
New Well Inspections	22	33
Water Samples Analyzed	220	261
NCPWS Inspection	14	19
Well Seal Permits	9	18
Comp. Well Inspection	1	5
Comp. Well Seal	2	2

WEST NILE VIRUS PREVENTION

	2019	2018
Sentinels Tested (total pools)	32	57
Human Cases	0	0

SEWAGE DISPOSAL

	2019	2018
New Septic Permits	22	29
Septic Repair Permits	7	10
Septic Alteration Permits	5	1
Septic Installation Inspections	29	32
Sewage Complaint Investigation	11	4
Land Application Permits	2	2
Operator Permits	242	250
Referred to Court	4	0

NUISANCE

	2019	2018
Refer to Other Agency	47	11
Inspections	41	16
Follow Up Inspections	5	4
Corrective Orders Issued	10	5
Cases Closed	72	49
Referred to Court	2	0

REAL ESTATE EVALUATION

	2019	2018
Wells	103	103
Septics	94	91

PLAN REVIEW

	2019	2018
Plats, Preliminary & Adjusted	0	0
Lots	0	0
Plats, Final	0	0
Total Lots	0	0
Revised Septic Plan	6	1
Other Reviews (additions, etc.)	71	77

WOMEN, INFANTS, AND CHILDREN

FAMILY CASE MANAGEMENT

	2019	2018
Infant (≤ 12 months)	191	181
Pregnant women	77	73
Home visits	58	76
Office visits	2754	3089
Breastfeeding clients (total)	39	43
Total caseload	268	254

APORS

	2019	2018
New referrals	22	20
Encounters/Assessments	71	67
Denver Screenings/ ASQs	71	67
Total caseload (≤ 24 months)	31	27

HEALTHWORKS

	2019	2018
Total caseload	23	17
New referrals	15	15
ACR's Completed	31	32
Encounters/ Assessments	32	32

TESTING & SCREENINGS

	2019	2018
Blood Level Tests	276	345
Elevated Blood Lead Level	20	4
High Blood Level Follow-up	10	24
Hearing Screenings	28	176
Vision Screenings	20	165
School Physicals	15	12
Gonorrhea/Chlamydia Test	51	80
Syphilis Tests	34	36
HIV Tests	36	36
DNA Screenings	137	32
Chronic Disease Screenings	50	28
Hepatitis C Tests	5	15
STI Treatments	29	44
Pregnancy Tests	10	9
Tuberculin skin tests (TST)	145	413
T-Spot tests	15	34

WIC

	2019	2018
New Clients	840	858
WIC Group Education	789	1025
Internet Education	176	N/A
Individual Education	690	722
Certification	1069	1130
Food Instruments (# of clients)	3576	3960
Total caseload	719	785

VACCINATIONS

ADULT VACCINATIONS

	2019	2018
Hep A	2	3
Hep A + Hep B	12	3
Hep B	3	8
Influenza	480	499
MMR	0	2
Meningitis	0	0
Meningococcal	0	10
Tdap	14	20

COMMUNICABLE DISEASE CONTROL

CONFIRMED, SUSPECT, & PROBABLE REPORTABLE DISEASES

	2019	2018
Outbreak investigation	1	1
Case investigation	35	45
Campylobacteriosis	7	7
Chickenpox	2	1
Cryptosporidiosis	0	4
E. coli	4	6
Giardiasis	0	0
Hepatitis A	0	0
Hepatitis B, acute	0	0
Hepatitis B, chronic	0	3
Hepatitis C, acute	0	0
Hepatitis C, chronic	7	6
Invasive Group A Strep.	4	2
Invasive Strep. Pneumonia	0	0
Lyme disease	0	7
Meningitis, Viral	0	0
Meningitis, Bacterial	0	0
Pertussis	0	3
Rabies Human Contact	5	6
Salmonellosis	5	10
Shigellosis	1	0
Tuberculosis	1	3
Others	6	11

CHILDREN VACCINATIONS

	2019	2018
DTaP	17	13
DTaP/IPV/Hep B	29	19
Dtap-Hib-IPV	24	13
HPV	16	23
Hep A	22	22
Hep B	26	20
Hib	37	31
Influenza	122	114
IPV	19	11
Meningococcal	56	60
MMR	27	16
MMR/Varicella	18	18
Pneumococcal	51	3
Rotavirus	28	11
Tdap	29	27
Varicella	37	22
Dtap IPV	14	13

SEXUALLY TRANSMITTED INFECTIONS

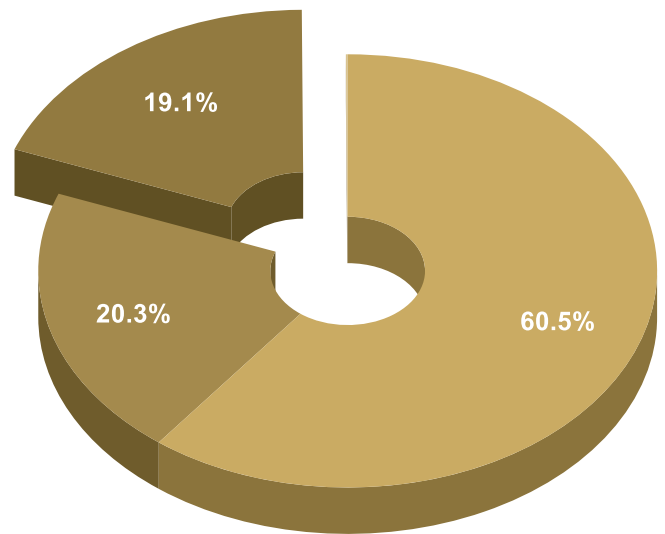
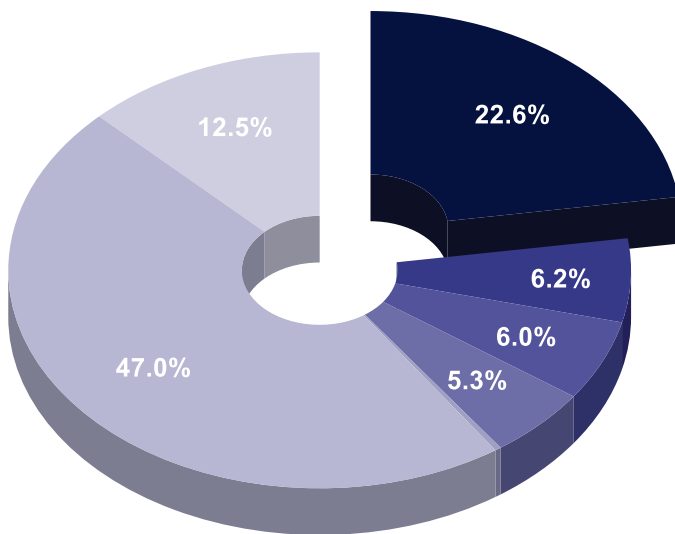
	2019	2018
Chlamydia	169	132
Gonorrhea	37	23
HIV/AIDS	0	0
Syphilis	0	3

TUBERCULOSIS CONTROL

	2019	2018
Ongoing DOT	19	N/A
Latent TB Treatment	0	N/A

FINANCIAL STATEMENT

REVENUES	2019	2018	EXPENDITURES	2019	2018
Local Taxes	\$255,254	\$255,086	Salaries	\$681,410	\$682,444
Permits, Licenses, etc.	\$69,822	\$237,835	Benefits	\$229,321	\$222,834
Health Protection Grant	\$67,375	\$67,375	Operating Expenses	\$215,369	\$203,212
Clinic Fees	\$59,867	\$80,077	Equipment	\$1,059	-
Interest on Investments	\$3,634	\$2,650	Total Expenses	\$1,127,159	\$1,108,490
Program Grants	\$530,077	\$464,104			
Federal Funds for Services	\$141,130	\$22,085			
Total Revenue	\$1,127,159	\$1,131,229			



- Local Taxes
- Permits, Licenses, etc.
- Health Protection grant
- Clinic Fees
- Interest on Investments
- Program Grants
- Federal Funds

- Salaries
- Benefits
- Operating Expenses
- Equipment

BOONE COUNTY BOARD OF HEALTH

HEALTH DEPARTMENT STAFF

Jim Cox, *President*

Dr. James Phoenix, M.D., *Vice President*

Barbara Thrun, *Treasurer*

Jen Jacky, *Secretary*

Dr. Bernard O'Malley, *County Board Representative*

Dr. Dennis Corcoran, M.D.

Dr. Dan Lendman D.V.M.

Cira Bennet

Marshall Newhouse

Dr. Pacita Pumilia, D.D.S.

Lee Revels

Amanda Mehl, *Public Health Administrator / FOIA Officer*

Kari Kampen, *Director of Departmental Operations / FOIA Officer*

Kenia Aguayo-Miramontes, *Environmental Inspector*

Francine Alcantara, *Maternal/Child Health Programs Nurse Supervisor*

Esmeralda Avila, *Health Center Intake Associate*

Amayrane Diaz, *Public Health Nurse*

Sonia Eichstaedt, *Communicable & Chronic Disease Nurse Supervisor*

Chris Elias, *Office Coordinator*

Mariela Feliciano, *Maternal/Child Health Nurse Case Manager*

Ellen Genrich, *Emergency Response and Health Promotion Coordinator*

Michelle Gibson, *Environmental Center Supervisor*

Alisen O'Hearn, *Environmental Inspector*

Selene Martinez, *Health Center Intake*

Associate/Breastfeeding Peer Counselor

Sue Schweitzer, *Maternal/Child Health Nurse Case Manager*

Ana Torres, *Office Assistant*

Mary Taylor, *Custodial*



www.twitter.com/BooneCoHealth



www.facebook.com/BooneCountyHealth



Public Health
Prevent. Promote. Protect.

**Boone County
Health Department**

www.boonehealth.org

1204 Logan Ave., Belvidere, IL 61008 P: 815.544.2951 F: 815.544.2050