

ADMINISTRATOR'S STATEMENT

Boone County Health Department 2014 Annual Report

On behalf of the Boone County Board of Health and staff, I am pleased to present the Boone County Health Department's 2014 Annual Report. Many activities and programs are discussed in this document, reflecting our progress toward continuing to make Boone County a healthier place to live.

Our objective is to prevent disease, protect against environmental hazards, promote healthy behavior, and to prolong life. We are fortunate to have a highly skilled, industrious, and passionate work force dedicated to the value and benefit of the services we bring to you, but we cannot do it alone. While providing essential public health services we continue to develop and engage community partners to provide a healthy and safe place to live for all residents of Boone County.

I would like to thank our staff, our Board of Health, the Boone County Board, our community partners and the residents of Boone County for continuing to provide us with the support and collaboration we need to do the work that we do each and every day.



Cynthia Frank, Administrator

FINANCIAL STATEMENT

Boone County Health Department 2014 Annual Report

Expenditures

Salaries & Benefits	\$915,966	80.7%
Operating Expenses	\$186,072	16.4%
Equipment	\$32,556	2.9%
Total Expenses	\$1,134,594	100.0%

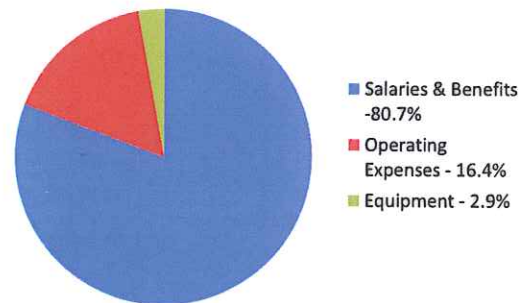
Revenue

Local Taxes	\$266,438	26.6%
Permits, Licenses & Other		
Environmental Services	\$160,383	16.0%
Health Protection Grant	\$0	0.0%
Clinic Fees	\$56,637	5.7%
Interest	\$2,753	0.3%
Program Grants	\$480,182	48.0%
Federal Funds for Service	\$34,602	3.5%
Total Revenue	\$1,000,996	100.0%

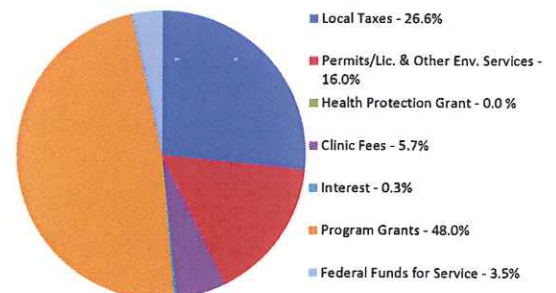
Balance

Health Fund	\$362,484	58.6%
Grant Fund	\$256,230	41.4%
Ending Balances 11/30/13	\$618,714	

Expenditures



Revenue



ENVIRONMENTAL HEALTH DIVISION

Boone County Health Department 2014 Annual Report



The goal of the Boone County Health Department (BCHD) Environmental Health division is to safeguard the public health by preventing the occurrence of environmentally influenced infectious diseases. Although enforcement of state and local environmental health codes is the primary tool used to meet the goal, implementation of environmentally sound practices and education are equally important. Permits are issued and inspections are performed for compliance with the State Food Sanitation, Private Sewage Disposal and Private Water Well codes. In addition, public requests for service are investigated and enforcement action taken if violations of county or state health codes are identified. Consultations with the public concerning these and other codes as well as general public health topics are ongoing.

The Boone County Health Department was chosen by the Center for Disease Control (CDC) to be a host site for their Public Health Associate Program (PHAP). The purpose of the program is to give recent bachelor's or master's degree graduates, with an interest in public health, the chance to work in a health department for two years. This program is funded through CDC and is provided at no cost to the Boone County Health Department. In October, we were very fortunate to be assigned Jada Walton, as our PHAP Associate. Jada is from Philadelphia, PA and a recent graduate of Pennsylvania State University. Jada will spend two years with us working and learning all aspects of public health. This opportunity will allow Jada to gain hands-on, frontline experience to serve as a foundation for her future career in public health. Please join us in welcoming Jada to Boone County!

Foodborne illness (FBI) continues to be a major public health issue nationwide. The FBI incident rate per capita in Boone County has been kept very low through the ongoing efforts of staff to correct / enforce, and promote sanitary consciousness during food handling. The Environmental Division not only issued food permits, inspected and enforced Sanitation codes and investigated complaints, but also conducted food safety classes to over 100 attendees.

Food education events	4
Food permits	509
Food inspections / investigations	615
Food consultations	2,036

Those Boone County residences (approx. 50%) not served by public utilities, rely upon private sewage disposal systems and private water wells. BCHD investigated complaints, issued system construction / repair permits, inspected and enforced state and county codes for both sewage and water well systems.

Private Sewage Disposal permits	33
Private Sewage Disposal inspections / investigations	31
Private Sewage consultations	1,150
Private Water Well permits	51
Private Water Well inspections / investigations	40
Private Water Well Consultations	1,137

The public often requests service from BCHD to investigate other complaints that may be violations of the Boone county health codes. These complaints can range from trash and rubbish piles to vacant homes, rodents, etc.

Health Code Complaint Investigations 95

In addition, mosquito traps were placed and monitored to verify the presence and location of West Nile Virus bearing mosquito pools in the county.

Number of mosquitos tested 1,477

BCHD is also contracted by property owners to perform well / septic evaluation to fulfill lending institution mortgage loan requirements.

Well and / or Septic Evaluations 216

Through the Illinois Tobacco Free Communities Grant BCHD conducted many programs including, Kick-Butts Day activities that reached over 350 5th grade students in Boone County, and conducted 14 classroom presentations to over 350 freshman health class students at Belvidere North High School and Belvidere High School. Through the promotion of the Illinois Tobacco Quitline, 272 calls were made by county residents seeking smoking cessation help. Public Health is also charged with the enforcement of the Smoke-Free Illinois Act. We followed up on six complaints against Boone County establishments in 2014.

Since September 11, 2001 public health has been responsible for planning and responding to incidents of bioterrorism and disease outbreaks such as pandemic influenza. Information is provided to the public about bioterrorism threats and other public health emergencies and appropriate responses. Efforts are coordinated with local, regional and state response plans and task forces, as well as our local police, fire, ambulance and emergency service providers. The primary role of BCHD's Public Health Emergency Preparedness program (Bioterrorism) in an actual bioterrorism event is the distribution of antibiotics or vaccines to the residents of Boone County that may have been exposed to a biological agent. A secondary role is to address any public health issues which may follow a disaster event or an emerging infectious disease, such as Ebola.

Lead poisoning continues to be a public health concern with thousands of children being exposed to lead that can result in serious health problems. 75 percent of all homes built in the United States before 1978 have lead-based paint. There are hundreds of homes in Boone County with lead based paint in them. BCHD continues to receive the IDPH Delegate Lead Grant. This year our grant expanded to Environmental Health and allowed training for three lead assessor / inspectors. In addition, the Boone County Health Department has partnered with the Winnebago County Health Department in a federal Housing and Urban Development grant which promotes efforts to eliminate dangerous lead hazards from lower income homes; stimulate private sector investment in lead hazard control and educate the public about the dangers of lead-based paint.

PERSONAL HEALTH SERVICES DIVISION

Boone County Health Department 2014 Annual Report

Boone County Health Department's (BCHD) Personal Health Services Division continues to grow and develop to meet the changing requirements of our grants and the needs of our community. Below is a brief summary of the divisions' accomplishments:

WIC is a supplemental food program for Women, Infants and Children. The goal of the program is to improve pregnancy outcomes and early childhood development through nutrition interventions. All children turning 1 and 2 years of age in these programs are eligible for blood lead testing as well as nursing follow-up for children with elevated blood lead levels. In 2014, BCHD made major strides in achieving better breastfeeding outcomes amongst WIC participants by hiring a Breast Feeding Peer Counselor who now provides additional support and follow-up to WIC families. In addition to BCHD's regular WIC programming, we now offer a walk-in clinic for breastfeeding moms to weigh their babies every Wednesday morning from 9-noon and a monthly support group for moms who are interested in breastfeeding or who are breastfeeding.

Average Monthly Caseload	870
Food Packages Distributed	4142
Individual Education Interventions	502
Group Education Interventions	1307
Blood Lead Tests	266

The Family Case Management (FCM) program serves pregnant women, infants up to one year of age, and Dept. of Children & Family Services (DCFS) wards. The program helps women have healthy babies and reduce the rate of infant mortality. Our Case Managers provide referrals to community resources and screening for maternal health and infant development.

FCM Average Monthly Caseload	434
Home Visits	28
Office Visits	2285
HealthWorks Average Monthly Caseload	34
HealthWorks Encounters	70

BCHD offers a high risk infant program APORS (Adverse Pregnancy Outcome Reporting System). Infants referred to this program are provided with home visits on a periodic basis. A physical and developmental assessment is completed and referrals are made to other providers.

Average Monthly Caseload	34
Referrals	27
Encounters/Assessments	70

BCHD offers immunizations and other specific clinic services to children and adults. The Vaccines for Children Program subsidizes the cost of many of the Childhood Immunizations offered to Medicaid Eligible, uninsured, and underinsured children. Walk-in appointments occur on Wednesdays and by appointment during the week. Seasonal clinics include School Physicals and Seasonal Flu Clinics.

Vaccines for Children	918
Vaccines for Adults	631
School Physicals	32

Besides WIC/FCM visits, screening, and immunizations, BCHD

provides some additional testing and screenings both in house and out in the community. BCHD offers vision and hearing screenings to children ages three and up who attend private / parochial schools, and to those in licensed day care facilities and preschools. Children who do not pass the vision and hearing screening tests are referred for further evaluation by a physician or optometrist. BCHD also coordinates with the Boone County Court System to provide DNA testing. This service coordinates DNA testing as requested by various laboratory centers for paternity testing.

Hearing & Vision Screenings	412
DNA	28

BCHD is responsible for the identification of potential communicable diseases and the control of the spread of communicable disease within the community. Through the Communicable Disease and Tuberculosis programs, BCHD coordinates the investigation of communicable disease outbreaks, determines the scope of the resulting health threat, and initiates appropriate action.

Communicable Diseases Investigated	216
Outbreak Investigation	3
Tuberculosis Skin Tests	106
Positive Tuberculosis Follow-up	10

New this year in February, BCHD opened a new Sexually Transmitted Infections (STI) clinic in order to create more accessible testing for Boone County residents. Members of the community can come to the health department for fast, confidential, and affordable testing, without health insurance or an appointment. Initially, Gonorrhea and Chlamydia testing were made available every Thursday from 9am to 5pm on a walk-in basis. BCHD's target population is young people 26 and under given that two thirds of all Gonorrhea and Chlamydia infections diagnosed nationwide are identified within this age group.

STI Screenings	43
----------------	----

We Chose Health (WCH) Year Two (2014) became the final year after IDPH announced early termination of statewide grant funding. BCHD continued their partnership with the University of Illinois Extension office by maintaining the 3 community gardens from last year (Perry Elementary, Capron Elementary, and The Belvidere Y) as well as a new garden this year at Caledonia Elementary School. Other WCH activities included a joint Worksite Wellness seminar hosted in partnership with the Winnebago County Health Department for local businesses in September as well as developing school wellness plans using the CDC's School Health Index with two area schools.

Body Smart is a program made possible by funding from the American Cancer Society. In 2014, BCHD's Health Educator was an NIU intern who worked closely with 2 schools reaching over 50 middle school and high school girls. Activities included nutrition information, exercise classes, and discussion on body image.

Progress towards the goals and objectives for BCHD's 2012 IPLAN continued this year. The focus in 2014 was the development of a Chronic Disease Screening and Education Program slated to start next year.

Protecting & Promoting Health in Boone County



Boone County Health Department
1204 Logan Ave.
Belvidere, IL 61008

BOONE COUNTY HEALTH DEPARTMENT ANNUAL REPORT 2014



Boone County Board of Health Members

<i>Member</i>	<i>Term Expires</i>	<i>Member</i>	<i>Term Expires</i>
Dr. Kent Hess, MD, President	7/1/2016	Marshall Newhouse	7/1/2017
Jim Cox, Vice President	7/1/2015	Dr. Bernard O'Malley, MD	7/1/2017
Allen Sisson, Treasurer	7/1/2015	Jack Spatz	7/1/2015
Kathleen Taylor, Secretary	7/1/2016	Sherry Branson, County Board Appointee	
Dr. Michael Brechon, DDS	7/1/2016	Former 2014 Board of Health Members	
Dr. Dan Lendman, DVM	7/1/2017	Anthony D'Souza, MD	
Dean May	7/1/2015	Linda Lowry	

*It is the mission of the Boone County Health Department
To Protect and Promote Health in Boone County*

It is further our vision for the Boone County Health Department:

To be recognized throughout the State of Illinois as:

- a catalyst to inspire and guide the community towards optimal health;*
- a creative and innovative leader in quality public health program delivery;*
- a model in public health program performance measurements;*
- a team of public health professionals who exemplify common core values and goals.*